

# Type 300R Hex Reducing Bushings

For Threaded Rigid Conduit and IMC.

**NEC/CEC:**  
Listed for Ordinary Locations

## Applications

- To reduce a threaded conduit entry into a smaller trade size.

## Standard Materials

- Malleable iron

## Standard Finishes

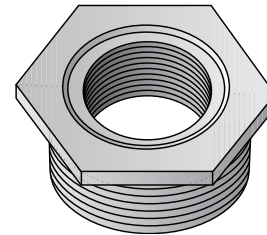
- Zinc electroplated

## NEC/CEC Certifications and Compliances

- UL Standard: ANSI/UL 514B
- UL Listed: E-11853
- CSA Standard: C22.2 No. 18
- CSA Certified: 009795
- NEMA: FB-1

## Options

- Hot dip or mechanical galvanize, add suffix **-G** to catalog number. Contact your local representative for pricing and availability.



Type 300R

Dimensions in Millimeters (Inches)				
Trade Size (Inches)	Max. Dim. Across Corners	Thread Length	Flange Thickness	Catalog Number
1/2 - 3/8	28.70 (1.13)	12.07 (0.50)	4.06 (0.16)	320-R
3/4 - 1/2	36.58 (1.44)	16.00 (0.63)	4.83 (0.19)	321-R
1 - 3/4	41.40 (1.63)	16.00 (0.63)	4.83 (0.19)	322-R
1 - 1/2	41.40 (1.63)	17.53 (0.69)	4.06 (0.16)	323-R
1-1/4 - 1/2	49.28 (1.94)	19.05 (0.75)	4.83 (0.19)	324-R
1-1/4 - 3/4	49.28 (1.94)	19.05 (0.75)	4.83 (0.19)	325-R
1-1/4 - 1	49.28 (1.94)	19.05 (0.75)	4.83 (0.19)	326-R
1-1/2 - 1-1/4	60.45 (2.38)	23.88 (0.94)	7.87 (0.31)	327-R
1-1/2 - 1	60.45 (2.38)	23.88 (0.94)	7.87 (0.31)	328-R
1-1/2 - 3/4	60.45 (2.38)	23.88 (0.94)	7.87 (0.31)	329-R
1-1/2 - 1/2	60.45 (2.38)	23.88 (0.94)	7.87 (0.31)	330-R
2 - 1-1/2	69.85 (2.75)	23.88 (0.94)	7.87 (0.31)	331-R
2 - 1-1/4	69.85 (2.75)	23.88 (0.94)	7.87 (0.31)	332-R
2 - 1	69.85 (2.75)	23.88 (0.94)	7.87 (0.31)	333-R
2 - 3/4	69.85 (2.75)	23.88 (0.94)	7.87 (0.31)	334-R
2 - 1/2	69.85 (2.75)	23.88 (0.94)	7.87 (0.31)	335-R
2-1/2 - 2	82.55 (3.25)	23.88 (0.94)	11.18 (0.44)	336-R
2-1/2 - 1-1/2	82.55 (3.25)	23.88 (0.94)	11.18 (0.44)	337-R
2-1/2 - 1	82.55 (3.25)	23.88 (0.94)	11.18 (0.44)	339-R
3 - 1-1/2	100.08 (3.94)	26.92 (1.06)	12.70 (0.50)	340-R
3 - 2	96.77 (3.81)	28.70 (1.13)	12.70 (0.50)	341-R
3 - 2-1/2	100.08 (3.94)	26.92 (1.06)	12.70 (0.50)	342-R
3-1/2 - 3	112.78 (4.44)	38.10 (1.50)	12.70 (0.50)	349-R
3-1/2 - 2-1/2	112.78 (4.44)	38.10 (1.50)	12.70 (0.50)	350-R
4 - 2-1/2	130.30 (5.13)	36.58 (1.44)	12.70 (0.50)	355-R
4 - 3	136.65 (5.38)	31.75 (1.25)	12.70 (0.50)	356-R
4 - 3-1/2	136.65 (5.38)	31.75 (1.25)	12.70 (0.50)	357-R

① Not UL Listed.